

OUR CAPABILITIES

- 1-40 Layers - HDI Technology
- Rigid, Rigid-Flex and Flex
- FR-4, Rogers, Polyimide, Hybrids
- Blind, Buried, Via-In Pad (Epoxy), Copper Via Fill
- High-Quality Finishes (ENIG, ENEPIG, HASL/PB-free, etc.)
- Controlled Impedance & Dielectric
- Flying Probe Testing, AOI
- Design-for-Manufacturing Check
- IPC Class II and Class III
- 2/2 mils minimum Trace/Space
- Ultra-Fast Turns - Even Next Day!
- Built in Silicon Valley

OUR FACTORY IN SILICON VALLEY

- Vision, Controlled-Depth Drilling
- Laser Microvia Drilling and Routing
- XRay Registration
- Laser Direct Imaging
- Nanosteam Curing Machine
- Pulse Plating
- Vacuum Lamination
- Automated Netlist Test
- 50,000+ sq.ft in Hollister, CA
- 100+ employees

24hr Turns Available (same day in the Bay Area!)



ROYAL CIRCUIT
SOLUTIONS

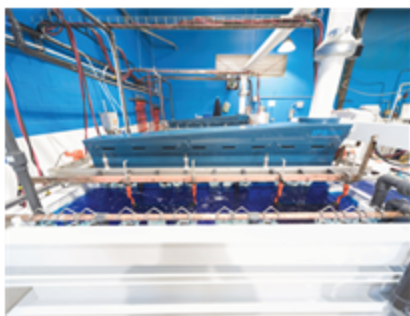
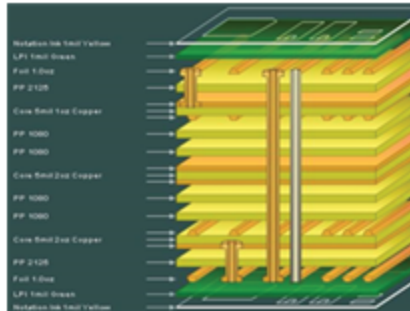
**Quick-Turn PCB Manufacturing -
Built in Silicon Valley since 1998**

Phone: (831) 636-7789

Email: sales@royalcircuits.com

Address: 21 Hamilton Ct, Hollister, CA

Website: www.royalcircuits.com



OUR CAPABILITIES

- 1-30 Layers
- HDI Technology
- Stacked and Staggered Sequential Micro-Vias
- Copper and Resin-Filled Vias
- High-Quality Finishes (ENIG, ENEPIG, HASL/PB-free, etc.)
- IPC Class II and Class III
- AS 9100:2016 (Rev D)
- 6mil Mechanical & 2mil Laser Drill
- 2/2 mil trace/space
- Controlled Impedance
- Extra Long Flex
- High Temp Materials
- Buried Resistance/Capacitance

OUR FACTORY IN LOS ANGELES

- Vision, Controlled-Depth Drilling
- Laser Microvia Drilling and Routing
- Laser Direct Imaging
- Pulse Plating, Automated Electrical Test
- 25,000 sq.ft in Los Angeles, CA



ROYAL FLEX
CIRCUITS

**Flex PCB Fabrication -
Built in Los Angeles since 1988**

Phone: (562) 404 - 0626

Email: sales@royalflexcircuits.com

Address: 15505 Cornet St,
Santa Fe Springs, CA

Website: www.royalflexcircuits.com

